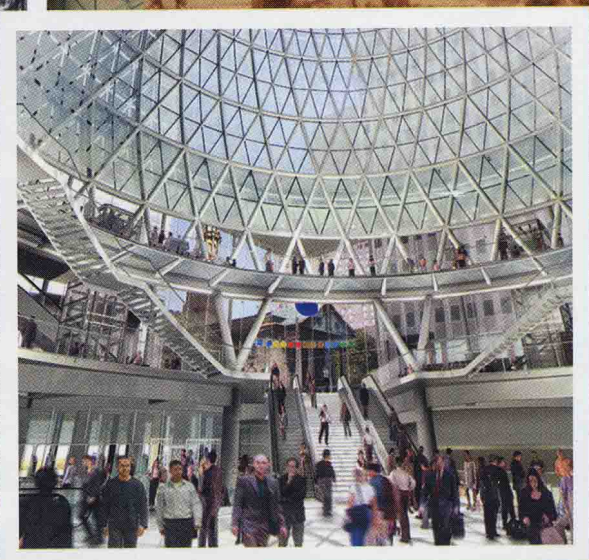
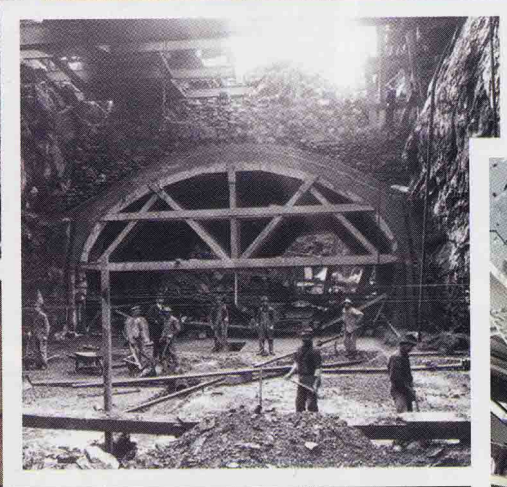
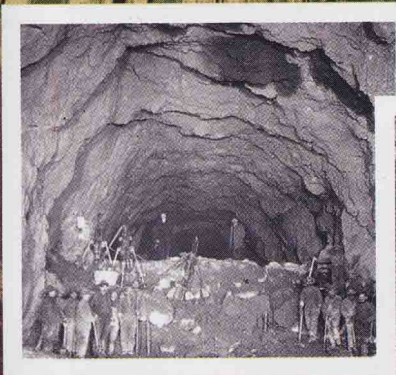


New York Construction

Subway Going Strong,
100 Years and Counting

Also Inside
2004 Top Design Firms
Retail Construction



Hoboken Moving Forward With 9/11 Memorial Plans

www.newyork.construction.com/news/design/archive/0410.asp

A group of artists, architects and others called the FLOW Group were selected to design a permanent memorial for the city to honor the victims of the Sept. 11, 2001 attacks.

Design Chosen for Hoboken 9/11 Memorial

The FLOW Group was chosen by the Hoboken September 11th Memorial Fund to design the permanent memorial for the city.

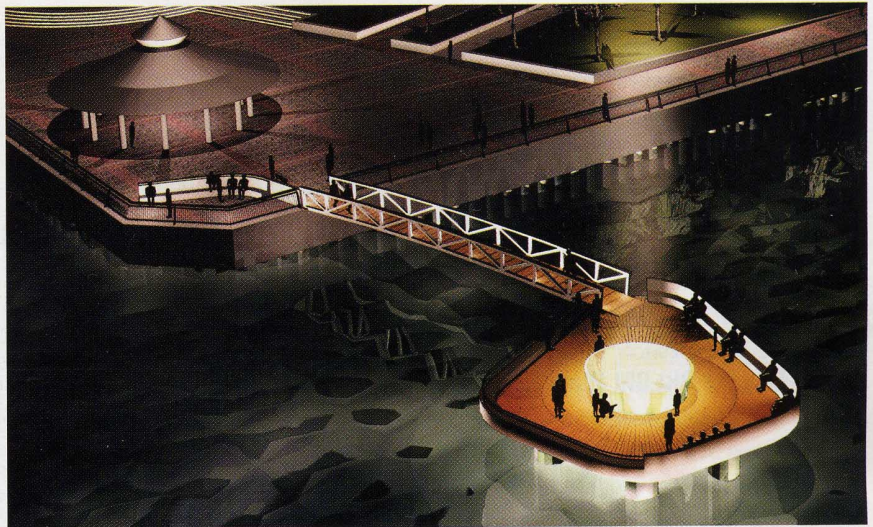
The members of the FLOW Group are artist Janet Echelman, architect Jeanne Gang, aeronautical engineer Peter Heppel, structural engineer Aine Brazil and architectural lighting designer Domingo Gonzalez.

"Hoboken Island" is the memorial concept submitted by the FLOW Group and selected by the Memorial Fund Committee. The concept proposes a freestanding island on the Hudson River, reached by a Narrative Wall and footbridge from Pier A Park. The wall will be inscribed with first-person-attributed accounts of the events of 9/11, including the experiences of Hoboken observers, neighbors, volunteers, medical-triage personnel, family members and final words of those who perished.

Located in the middle of the island will be a Tidal Well, a hole in the island's center around which will be a cast-glass Circle of Names where each of the 57 names of lost Hoboken residents will be inscribed. At night, the glass well and its water will be illuminated, making the island a visible symbol from Hoboken and Lower Manhattan.

LIE Improvements Moving Forward

The New York State Department of Trans-



A rendering of "Hoboken Island," a design by the FLOW Group selected by the Hoboken September 11th Memorial Fund.

portation has awarded a contract to Parsons Brinckerhoff to prepare an Environmental Impact Statement and preliminary design of improvements to the Long Island Expressway in the area of the interchanges between the LIE, Grand Central Parkway and the Van Wyck Expressway.

The LIE and Van Wyck are interstate highway connectors; the Grand Central Parkway is a state-owned, limited access parkway. The project area encompasses the interchange of the three highways, including its connecting ramps, collector distributor roads, and service roads, as well as the adjacent upstream and downstream roadway segments of each highway mainline as necessary to evaluate and implement improvement alternatives. There are nine bridges that require rehabilitation to varying degrees and two possible new bridges. The EIS will also include segments of local city arterials and local streets in the study area, as appropriate.

Metro-North Stations to be Upgraded

Vollmer Associates LLP has been selected by Metro-North Railroad to provide architectural design services for projects at 16 stations on the Upper Harlem commuter line in Westchester and Putnam counties in New York.

The work will enhance the appearance, comfort, accessibility and operations of these stations. The scope covers restoration and improvements to various station structures and ancillary facilities, including platform canopies and overpasses, stairways, walkways, waiting areas, fencing, lighting, mechanical/electrical and elevator systems.

The stations that will be upgraded are located in Tuckahoe, Scarsdale, White Plains, North White Plains, Valhalla, Hawthorne, Pleasantville, Chappaqua, Mount Kisco, Bedford Hills, Katonah, Goldens Bridge, Purdy's, Croton Falls, Brewster and Brewster North. <<